

hot finds SALONE DEL MOBILE MILAN & DESIGN DAYS DUBAI

ELLE DECOR

www.elledecor.co.in

**NOW
TRENDS**

purple haze
doodle art
colour
bursts
two
seaters

JUNE - JULY 2012, ₹150

in conversation with...
TADAO ANDO, SUNITA KOHLI
ALFAZ MILLER, OKI SATO

MINI IDEAS FOR MAXIMUM COMFORT
BUDGET LIVING

CHIC HOMES UNDER 1,000 SQ FT, SPACE SAVING FURNITURE,
19 PAGES OF DO-IT-YOURSELF MAKEOVERS FOR THE ENTIRE HOUSE,
REVAMP AND REJUVENATE

The open plan styling area has paired tables divided by mirrors that are suspended from the ceiling and uniformly lit along the periphery by concealed LEDs

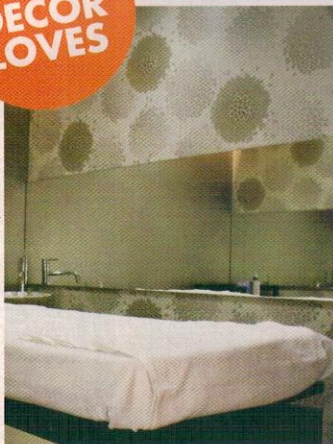
EDGY SCISSORHANDS

Inspired by layered manes, M:OFA Studios ensures Toni & Guy's Gurgaon outlet is a cut above the rest

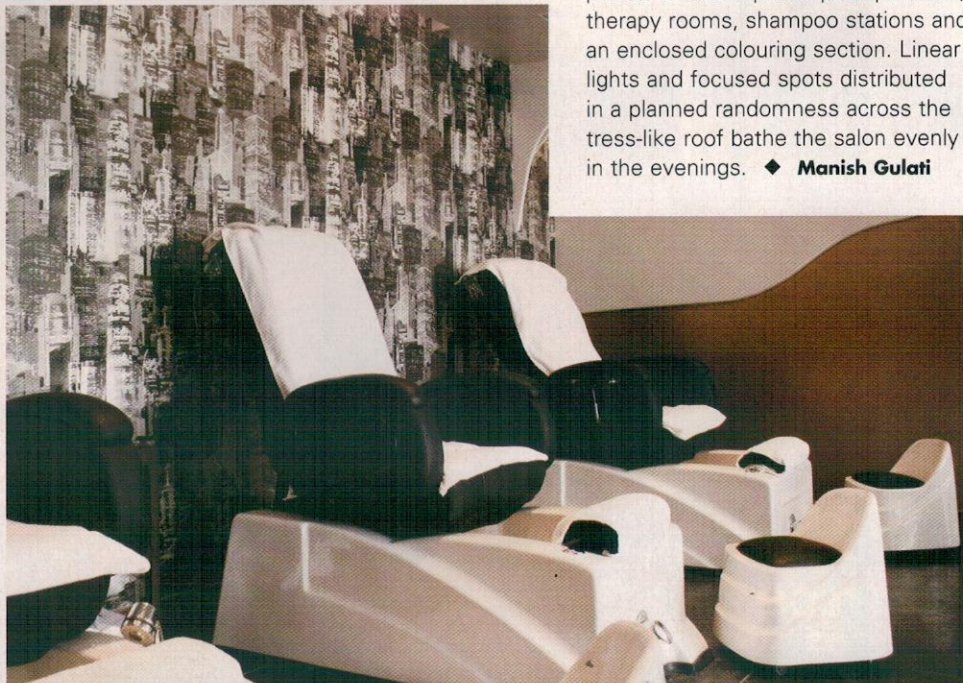
NEW LOOKS



ELLE
DECOR
LOVES



Clockwise, from Top Left The reception area in their characteristic palette of black, white and shades of grey; Pedispa is top of the line and offers the latest treatments; Close up of the main styling space; Soothing spa therapy rooms



Founded in 1963, Toni & Guy have over a 100 branches and follow a palette of black and white with shades of grey across their interiors worldwide. For their new salon in Gurgaon our challenge was to juggle style, functionality and brand identity and come up with something unique. We evolved the decor on the symbolism of hair and comb that they are known for.

Suspended, laser cut MDF panels held together by thin, closely fitted wooden louvres demarcate the various spaces within and depict both, the drama created by flowing tresses and the interaction between hairdresser and client. An open plan has the styling tables coupled and sporadically spread within the main area. Each pair is divided by mirrors hung from the ceiling, placed back to back and lit along the edges by concealed LEDs that emanate a uniform glow. The parlour also comprises pedispa areas, therapy rooms, shampoo stations and an enclosed colouring section. Linear lights and focused spots distributed in a planned randomness across the tress-like roof bathe the salon evenly in the evenings. ♦ **Manish Gulati**



SUSPENDED, LASER CUT MDF PANELS HELD TOGETHER BY WOODEN LOUVRES ...DEPICT THE DRAMA CREATED BY FLOWING TRESSES